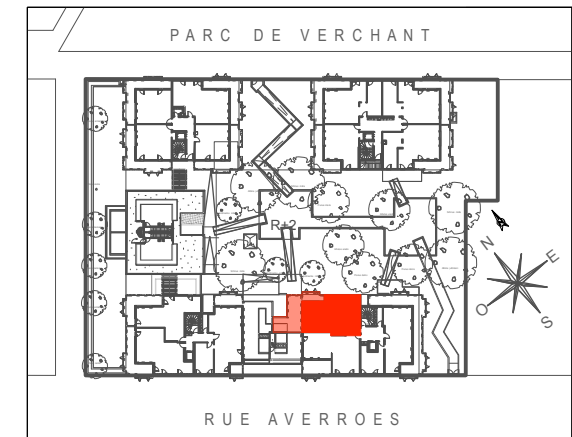
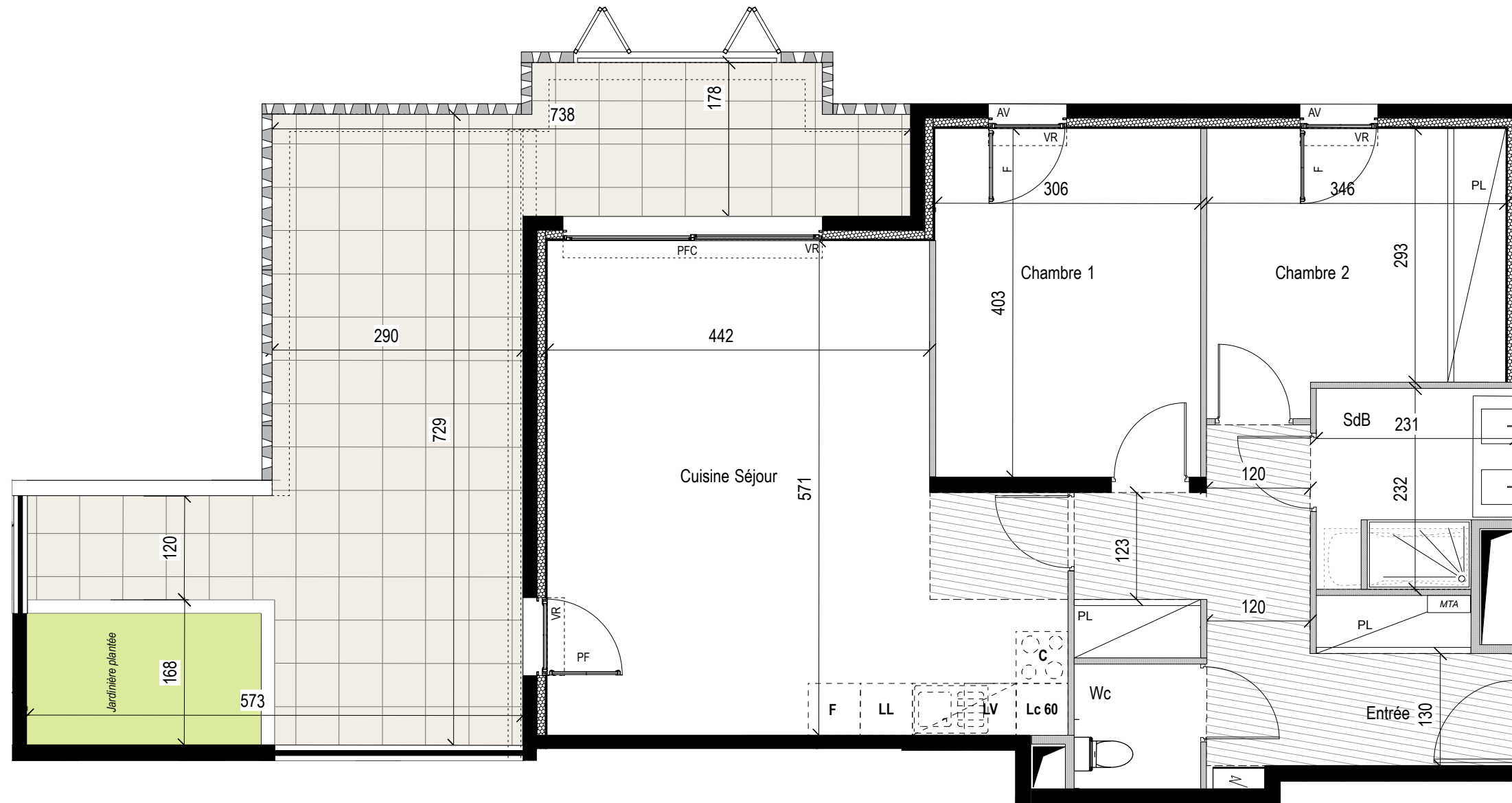


Résidence L'intemporelle

PLAN DE PRE-COMMERCIALISATION





Etage : R+2 Type : T3


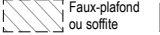

N° Appartement C22

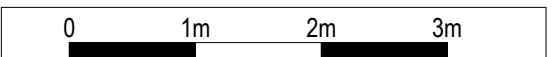
ENTREE + PL	11,80 m ²
SEJOUR CUISINE	29,70 m ²
CHAMBRE 1	12,30 m ²
CHAMBRE 2 + PL	10,60 m ²
SALLE D'EAU	4,90 m ²
Wc	2,10 m ²
SURFACE HABITABLE	71,40 m²
TERRASSE	31,50 m ²
JARDINIERE PLANTEE	4,80 m ²
SURFACE TOTALE	107,70 m²

LEGENDE

MENUISERIES :
 VR Volet roulant F Fenêtre AV Allege vitree
 PF Porte Fenêtre PFC Porte Fenêtre Couissante

FACADES TERRASSES :
 Garde Corps béton ajouré
 Garde corps métal et Volets aluminium ajourés coulissants repliables

AMENAGEMENTS :
 Tableau électrique  Faux-plafond ou soffite  Gaine technique



18/02/2021 Indice : 0